

Item 4121 50 MTPD Winterizing System (Kingston, Jamaica)

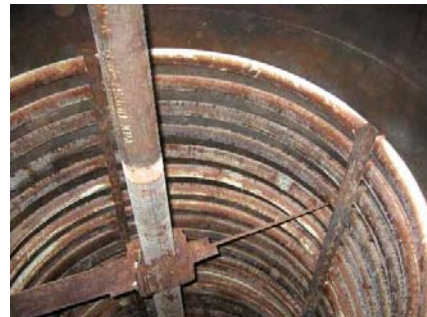
click on any link for photo

Description: Winterizing system rated at 50 MTPD. Can be increased to 100 MTPD with more crystallizers. Includes two crystallizer vessels, pump and membrane filter. This system was used to fractionate/winterize palm oil single cut. It is designed for chilled water cooling using a 40 ton Freon chilling system (not included).



Two Crystallizer Tanks

Crystallizer tanks - Vertical carbon steel, cone top and bottom, insulated, with sweep blade agitator - 3 sets of blades. 3 inch diameter cs coils around the inside of tank, top to bottom. Top entering manhead. Approx size 8 ft dia x 30 ft tall + 4 ft skirt on bottom



Complete Listing of Major Components. [CLICK on any link for Photo](#)

[Item 4121 .Winterizer System 50TPD](#)

Winterizing system rated at 50 MTPD. Can be increased to 100 MTPD with more crystallizers. Includes two crystallizer vessels, pump, and membrane filter. This system was used to fractionate/winterize palm oil (single cut). It is designed for chilled water cooling using a 40 ton Freon chilling system (not included). System was installed circa 1997 and ran for 4 to 4.5 years. Please note that this system will require all new controls and refurbishing.

COMPONENTS

[Item 4119 .Crystallizer Tank 1](#)

Crystallizer tank. Vertical carbon steel, cone top and bottom, insulated. With sweep blade agitator - 3 sets of blades. 3 inch diameter cs coils around the inside of tank, top to bottom. Top entering manhead. Approx size 8 ft dia x 30 ft tall + 4 ft skirt on bottom = approx 11,300 gallons

[Item 4118 .Crystallizer Tank 2](#)

Crystallizer tank. Vertical carbon steel, cone top and bottom, insulated. With sweep blade agitator - 3 sets of blades. 3 inch diameter cs coils around the inside of tank, top to bottom. Top entering manhead. Approx size 8 ft dia x 30 ft tall + 4 ft skirt on bottom = approx 11,300 gallons

[Item 4117 .Membrane Filter](#)

Membrane filter for fractionation or winterizing. Hydraulic. With 60 Lenser plates, approx plate size 51 inch x 51 inch. Made in 1992. Approx size of membrane filter is 20 ft long, bed is approx 15 ft long, overall width 7 ft. Press in good shape - Hydraulic pump and controls missing, will need new control system.

Terms: All equipment is sold As Is Where Is. The Bill of Sale will be between seller and the buyer. Description of the equipment - especially those relating to capacity, size, or condition - are stated as clearly as possible for information to the buyer or observer. The descriptions and representations cannot be taken as accurate. The buyer has the sole responsibility to determine size, capacity, capability, suitability, condition, or any other attribute pertaining to the piece of equipment represented or purchased. The assets are sold "As Is", "Where Is" and "with all faults" and except as explicitly stated in the Bill of Sale. All warranties, including, without limitation, the warranties of merchantability, quality, and fitness for a particular purpose are hereby expressly excluded. Seller makes no representations or warranties as to design, condition, capacity, performance, or any other aspect of the asset.